

Campaign Extra

Assembly instruction



Remove the pole set from the stand.



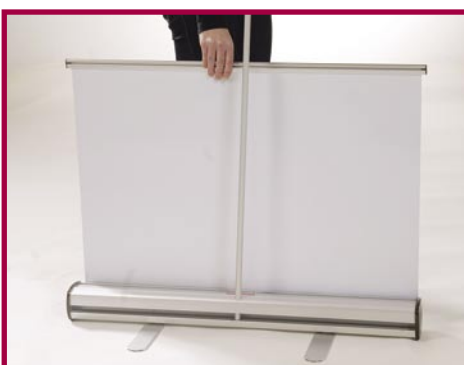
Swivel the two support feet into position.



Assemble the pole sections.



Attach the pole to the stand.



Pull the graphic banner up.



Hook the pole to the centre of top rail of the banner.

Technical information

Graphic material

We recommend a maximum thickness of 0,3 mm / 0.012"

Graphic measure

Width: 850 mm / 33.45"
 Printable length: 2020 mm / 79.5"
 Banner length: 2200 mm / 86.5"

Facts

Weight: 2,8 kg / 6.2 lbs.
 Total height: 2100 mm / 82.5"
 Carrying bag with shoulder strap included

Mounting of graphic banner



Open the top rail and position the graphic banner.



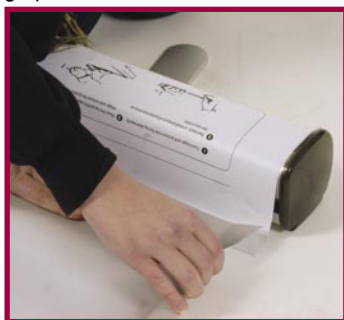
Lock the top rail.



Release the screw and take one of the end caps away.



Remove the paper backing from the tape on the leader strip.



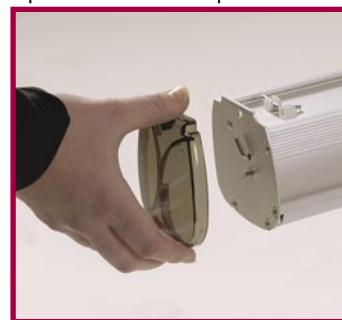
Attach the bottom of the graphic banner to the leader strip. Back of graphic attaches to the tape.



Hold the graphic banner firmly and remove the locking pin.



Let the banner slowly roll into the cassette.



Reposition the end cap. Fasten with the screw.